



MPS-MP

Wired to an LNR Panel

The MPS-MP is designed to detect snow or ice, and automatically activate contactors for snow melting cables.

MPS-MP INCLUDES:

1. MPS Control Panel
2. MP Moisture/ Temperature Sensor

OPTIONAL ITEMS:

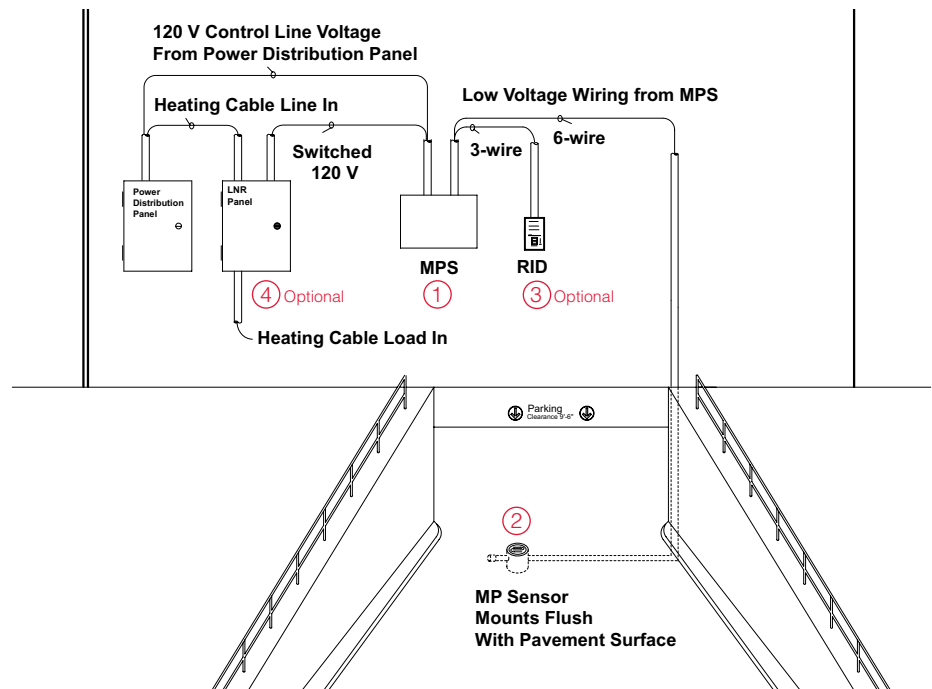
3. RID (Remote Indicator and Activation Timer)
4. LNR Panel



WARNING: This device must be installed by a qualified electrician. All assembly, installation, and test instructions must be followed. Improper installation can result in property damage, serious injury, and/or death due to electric shock. Call Delta-Therm at 1-800-526-7887 with any installation or operating questions.

Finished Install

NOTE: The National Electrical Code (NEC) requires 30mA Ground Fault Protection Equipment (GFPE) on this system. Check with all local codes prior to installation.



DELTA-THERM.COM

DELTA-THERM Corp., P.O. Box 345, Wauconda, IL 60084 (800) 526-7887 Fax (847) 526-4456

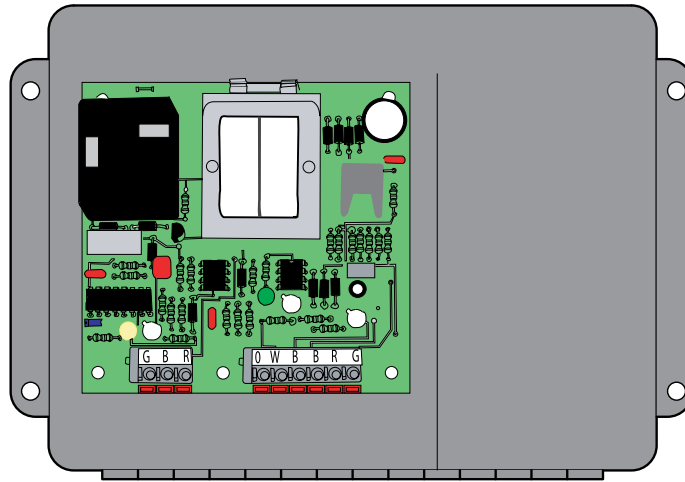


leaders in engineered heat trace

1

Installing the MPS-MP Control Panel

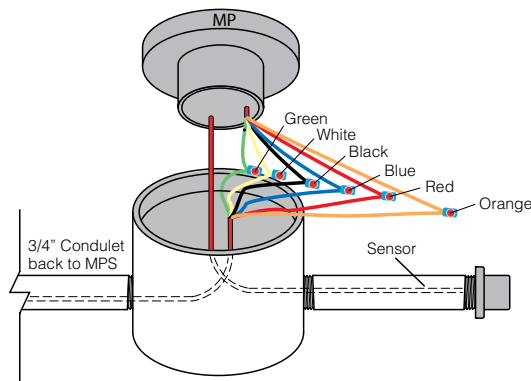
The MPS (NEMA 4) Control Panel must be installed by a qualified electrician.



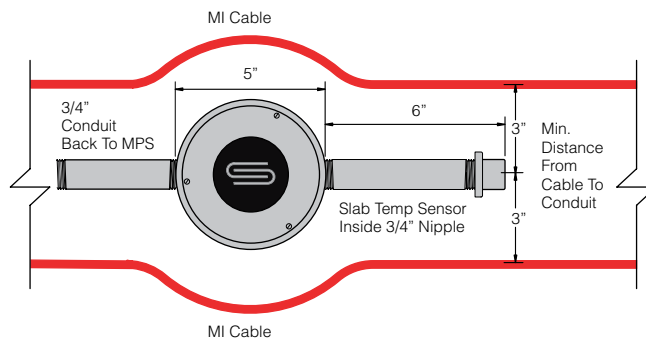
NOTE: The National Electrical Code (NEC) requires 30mA Ground Fault Protection Equipment (GFPE) on this system. Check with all local codes prior to installation.

2

Installing the MP Sensor



Side View MP



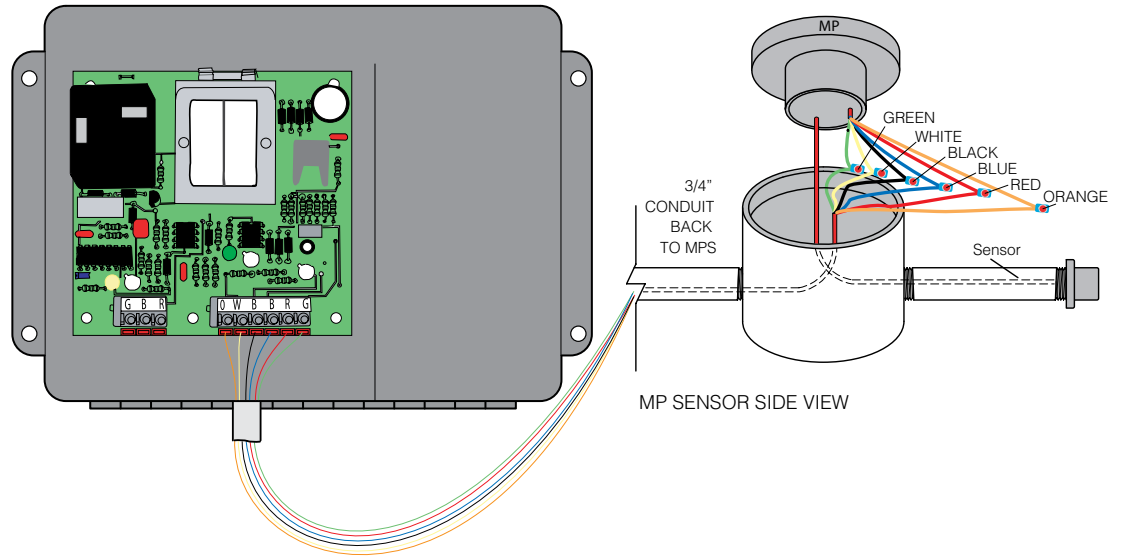
Plan View MP

NOTE: Water proof wire nuts are not provided with sensors.

3

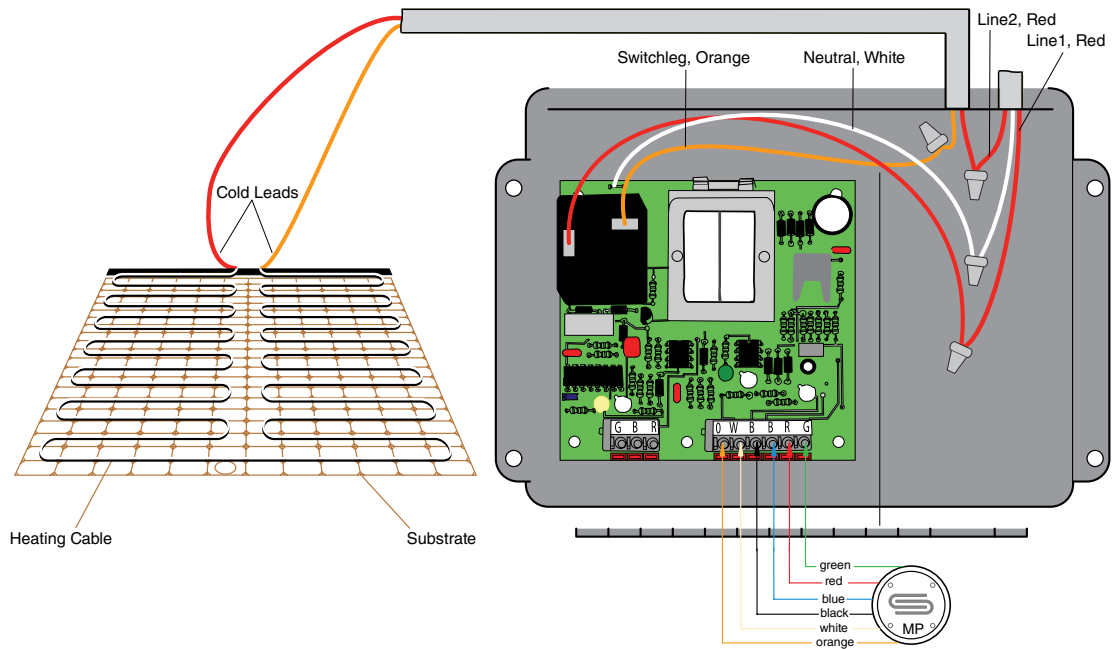
Wiring the MP Sensor

- orange — O
- white — W
- black — B
- blue — B
- red — R
- green — G



4

Wiring MPS-MP 240 VAC to Heating Cable



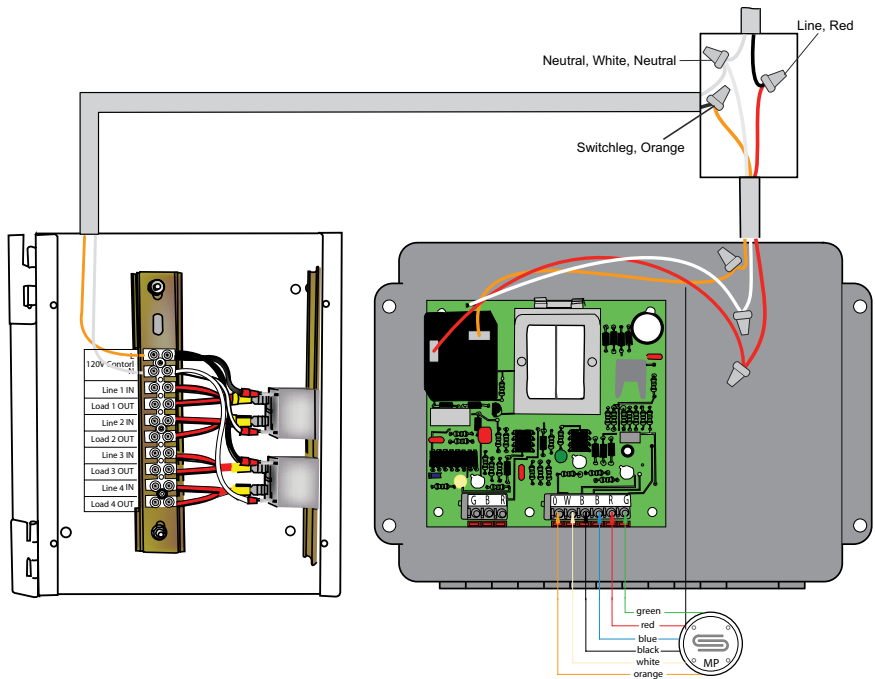
- At 240 VAC neutral wire is required for MPS.
- MPS can switch up to 24 amps.



5

Wiring MPS-MP 120 VAC to an LNR Panel

NOTE: The National Electrical Code (NEC) requires 30mA Ground Fault Protection Equipment (GFPE) on this system. Check with all local codes prior to installation.



6

Installing and Wiring RID

