



DTC120-PS

Wired to Enclosed Contactor Panel

DTC120-PS is designed to detect snow or ice, and automatically activate contactors for snow melting cables or mats.

DTC120-PS INCLUDES:

1. DTC Control Panel
2. PS Slab Sensor
3. SS Slab Sensor
4. OTS-F1 Ambient Thermostat

OPTIONAL ITEMS:

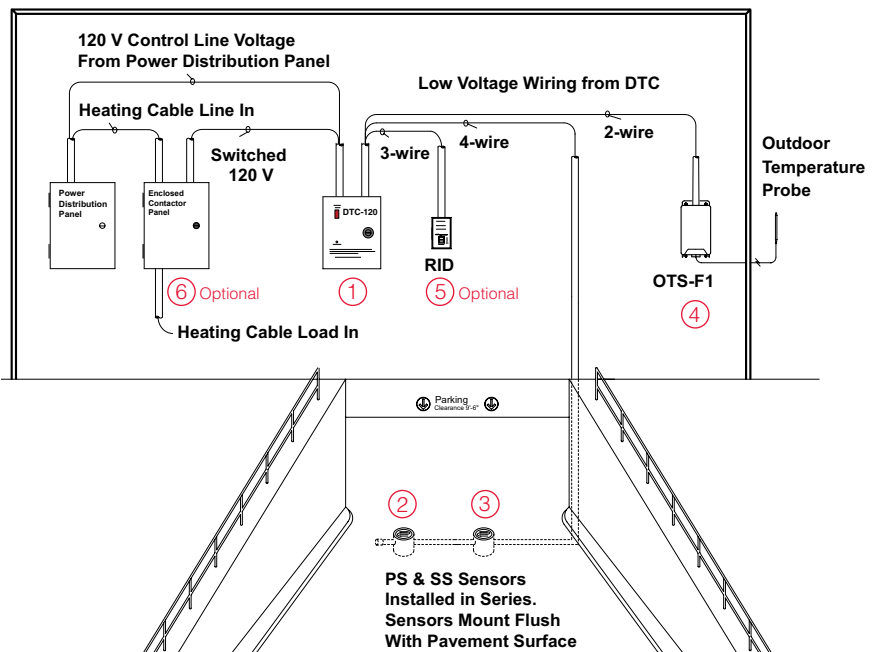
5. RID (Remote Indicator and Activation Timer)
6. Enclosed Contactor Panel



WARNING: This device must be installed by a qualified electrician. All assembly, installation, and test instructions must be followed. Improper installation can result in property damage, serious injury, and/or death due to electric shock. Call Delta-Therm at 1-800-526-7887 with any installation or operating questions.

Finished Install

NOTE: The National Electrical Code (NEC) requires 30mA Ground Fault Protection Equipment (GFPE) on this system. Check with all local codes prior to installation.



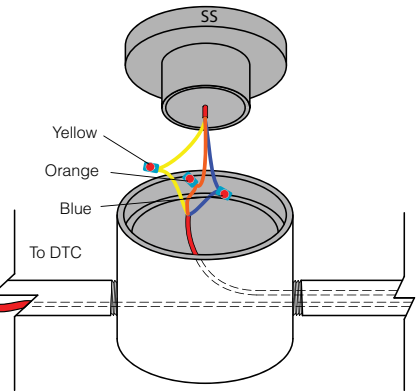
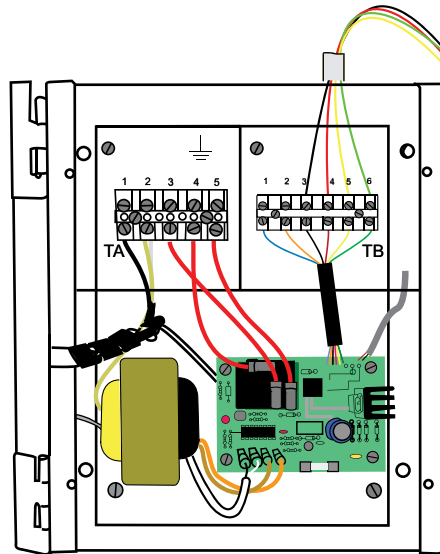
DELTA-THERM.COM



3

Wiring the PS and SS Sensors

- black ———— TB3
- red ———— TB4
- yellow ———— TB5
- green ———— TB6

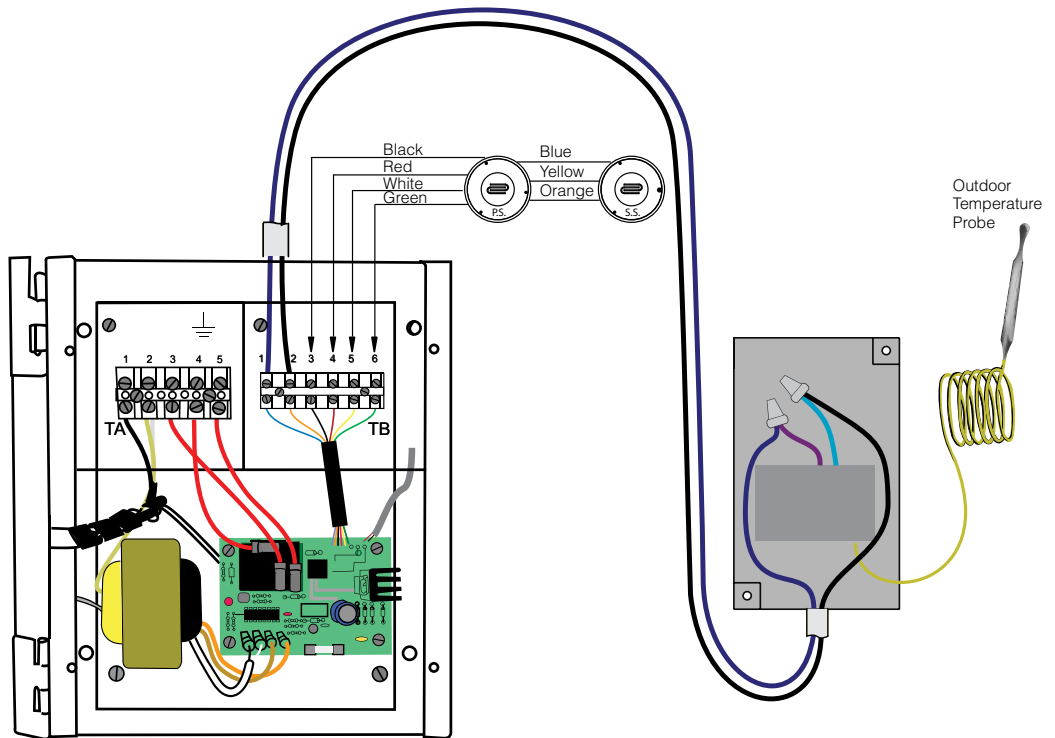


Side View SS

NOTE: Water proof wire nuts are not provided with sensors.

4

Wiring OTS-F1

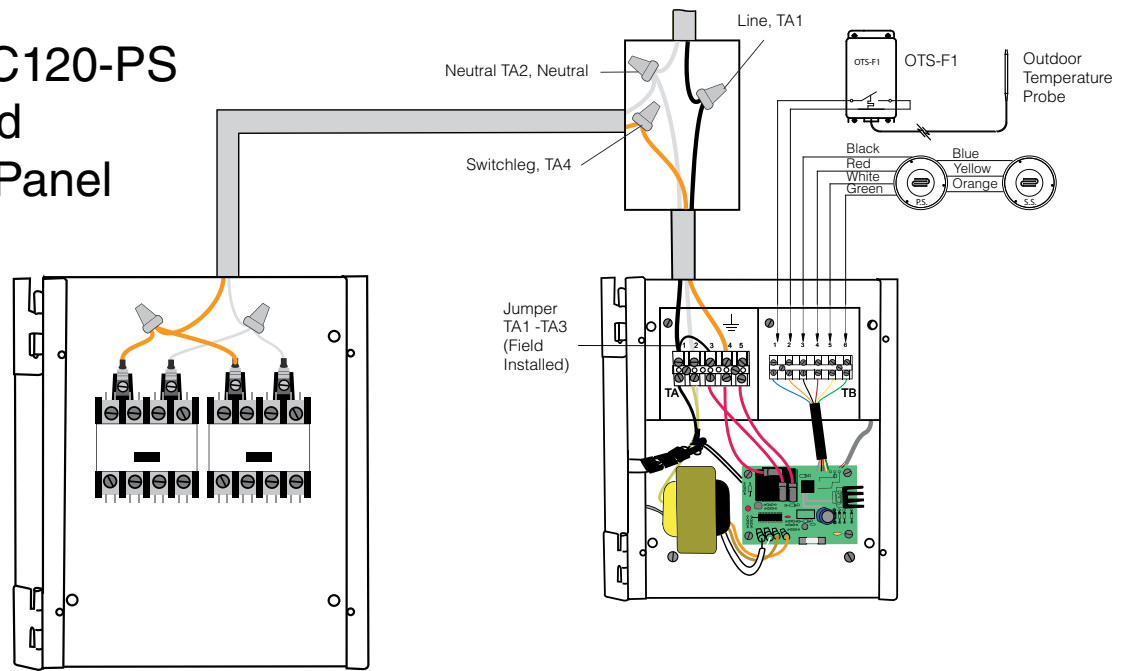




Snow Melting Q.I.G.

5

Wiring DTC120-PS to Enclosed Contactor Panel



6

Installing and Wiring RID

