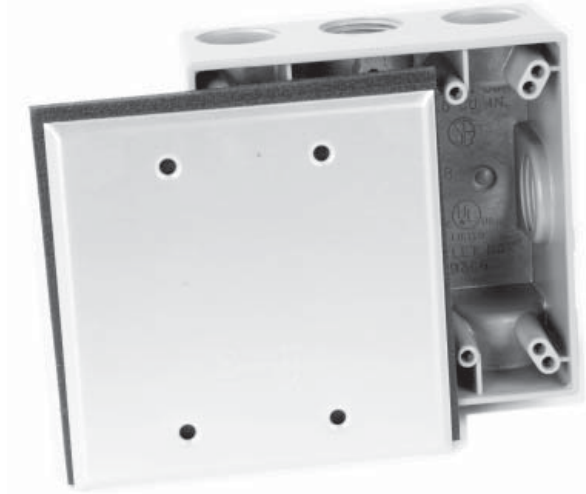


DT-BOX

Electrical Junction Box



DESCRIPTION

The DT-Box is an electrical junction box with .75" (2cm) hubs for making field terminations.

- Suitable For Wet Locations
- Heavy Duty Die Cast Aluminum .094" (.2cm) Thick, With Baked Aluminum Finish.
- For Use In All Ordinary Indoor And Outdoor Damp Or Wet Locations, For Splicing.
- 2 Close-Up Plugs Supplied With Each Box.
- Complies With Federal Specification WC-586C.
- W/H/D 4.5/4.5/2 Inches (11/11/5cm)
- Rated NEMA 4X.

For use with the following connection kits:

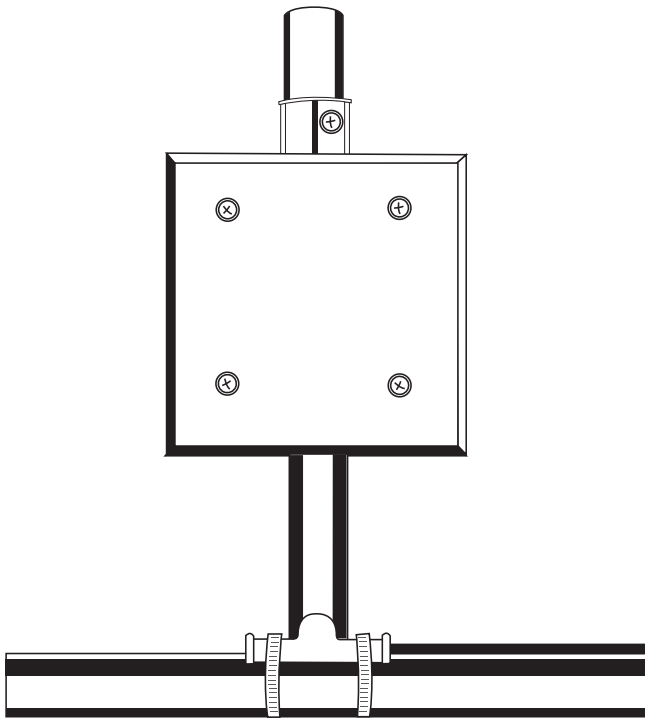
- PCK-C6
- PCK-IN
- PCK-RG
- PCK-RGP
- PCK-TT
- PCK-HT
- PCK-PT/PF



Caution

Caution: Hazard of electric shock. Disconnect all power before starting. All installations must be grounded to earth to eliminate shock hazards.





Detail 1. DT Box installed on pipe. (Box only. Standoff, pipe straps included with power connection kits: PCK-IN, PCK-HT, PCK-PT/PF.)

TECHNICAL SUPPORT

A full set of installation instructions is included with order.
Please call 1-800-526-7887 with any questions.