

## OTS-3A AND OTS-4A

### Line And Ambient Sensing Thermostats



Detail 1. OTS-3A.

#### OTS-3A DESCRIPTION

Delta-Therm's OTS-3A is an explosion proof and weather-proof temperature control suitable for indoor or outdoor use. The lightweight NEMA 4, 7, 9 and IP65 enclosure is made of die cast aluminum featuring gray aluminum lacquer.

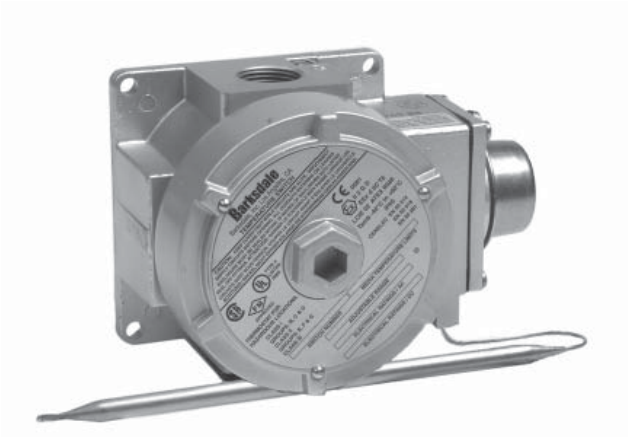
#### APPLICATIONS

**Classified Area Pipe Tracing Systems**

#### APPROVALS

**Hazardous:** UL Listed, CSA Certified and FM Approved for use in the following categories:

UL	CSA/FM
Class I, Div. 1 & 2 Grps. B, C & D	Class I, Div. 1 & 2 Grps. B, C & D
Class II, Div. 1 & 2 Grps. E, F & G	Class II, Div. 1 & 2 Grps. E, F & G
	Class III, Div. 1 & 2



Detail 1. OTS-4A.

#### OTS-4A DESCRIPTION

Delta-Therm's OTS-4A is an explosion proof and weather-proof temperature control suitable for indoor or outdoor use. The lightweight NEMA 4, 7, 9 and IP65 enclosure is made of die cast aluminum featuring gray aluminum lacquer.

#### APPLICATIONS

**Classified Area Pipe Tracing Systems**

#### APPROVALS

**Hazardous:** UL Listed, CSA Certified and FM Approved for use in the following categories:

UL	CSA/FM
Class I, Div. 1 & 2 Grps. B, C & D	Class I, Div. 1 & 2 Grps. C & D
Class II, Div. 1 & 2 Grps. E, F & G	Class II, Div. 1 & 2 Grps. E, F & G
	Class III, Div. 1 & 2

### OTS-3A SPECIFICATIONS

**Enclosure:** NEMA 4, 7, 9 and IP65. Die cast aluminum with silver-painted anodized aluminum. Tamper proof external adjustment.

**Connection:** Screw terminals on covered terminal strip through .75" (.64cm) NPT conduit connection.

**Switch:** Single pole, double throw, snap action switching element.

**Range:** 25°F to 325°F (3.9°C to 163°C)

**Ambient Range of Enclosure:** -40°F to 160°F (-40°C to 71°C)

**Rating:** 22 Amps up to 480 VAC

**Sensor:** 10' (3m) SS capillary .312/7.75 inch (8mm/20cm) bulb

**Differential:** 10°F (12°C) (approximate)

**Wiring:** Open on temperature rise - wire to C and NC

### OTS-4A SPECIFICATIONS

**Enclosure:** NEMA 4, 7, 9 and IP65. Die cast aluminum anodized with silver-painted aluminum. Tamper proof external adjustment.

**Connection:** Screw terminals on covered terminal strip through .75" (.64cm) NPT conduit connection.

**Switch:** Single pole, double throw, snap action switching element.

**Range:** 15°F to 140°F (9°C to 60°C)

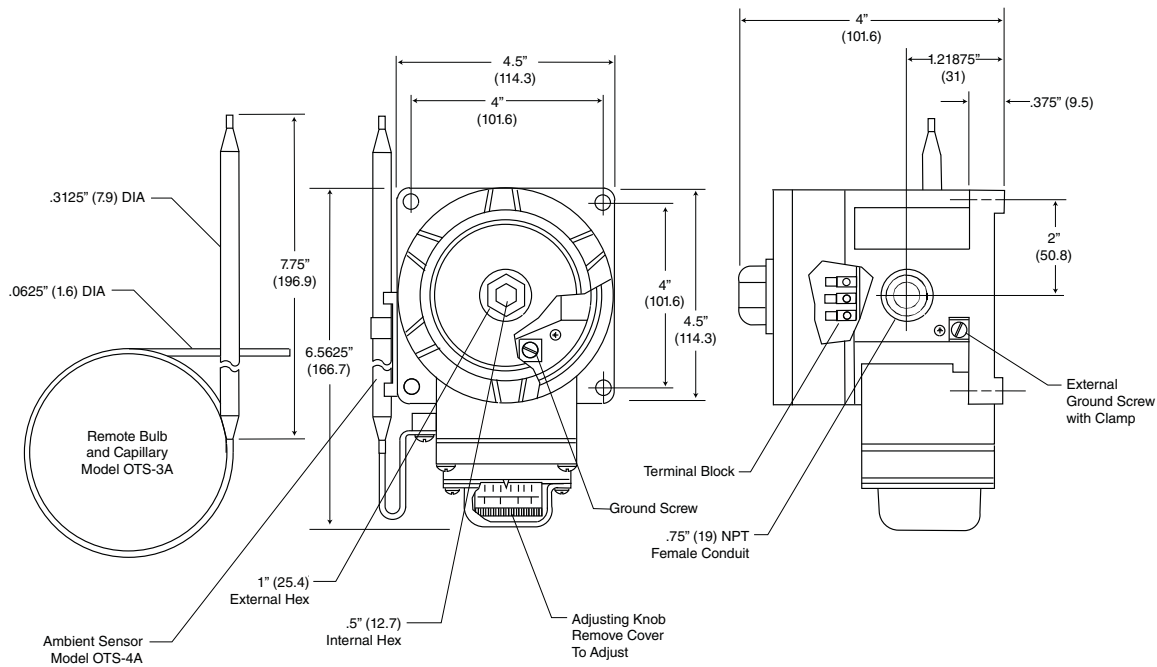
**Ambient Range of Enclosure:** -40°F to 160°F (-40°C to 71°C)

**Rating:** 22 Amps up to 480 VAC.

**Sensor:** 316L SS sensor.

**Differential:** 10°F (12°C) (approximate)

**Wiring:** Open on temperature rise - wire to C and NC



Detail 1. OTS-3A and OTS-4A enclosure dimensions in inches (mm).