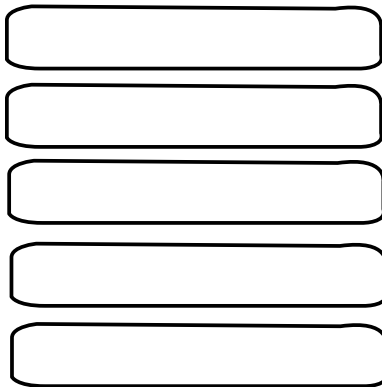


ETK-PF/PT-5

PT and PF Series End Termination Kit



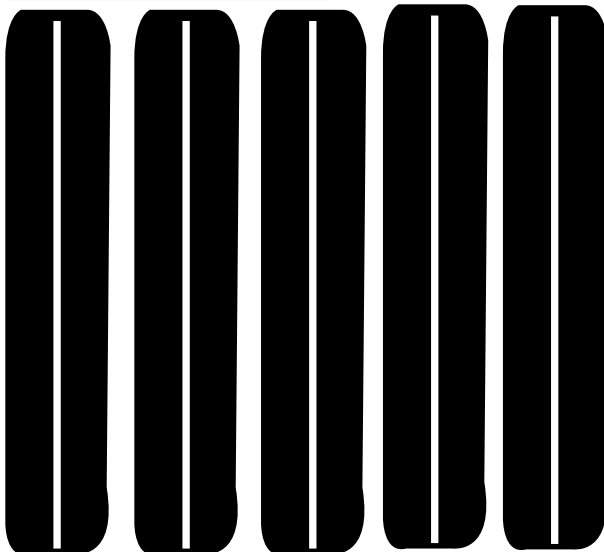
This kit and the cable used with it must be installed by a qualified electrician. All assembly, installation, and test instructions must be followed. Improper installation can result in property damage, serious injury, and/or death due to electric shock and fires. Please call Delta-Therm Corporation at 1-800-526-7887 with any installation or operating questions.



High Temperature
Fiberglass Tape



PT-50



Silicone Tape

GENERAL

The ETK-PF/PT-5 allows you to make five electrical end terminations to the PT or PF series Powertrace constant wattage heater cable. The kit contains materials for five end terminations. These terminations can be made on the pipe for temperature ranges up to 260 °F. Higher pipe temperatures require that the termination be made off the pipe in a junction box (STK-AL is required).

CABLE ZONE MARKERS

The zone markers for the PT cable are raised bumps on the cable edge. The markers on the PF cable may be raised bumps, or slight depressions on the cable edge.

CONTENTS

- 5 Silicone End Cap
- 5 - 6" Silicone Tape
- 5 - 4" High Temperature Fiberglass Tape

ITEMS REQUIRED BUT NOT SUPPLIED

- Weather-tight junction box, 3/4" NPT hubs
- Conduit
- STK-AL (Stand-off)

TOOLS REQUIRED

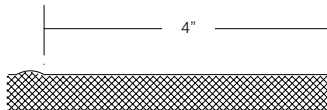
- Crimping Tool
- Wire Stripper/Cutter
- Utility Knife
- Measuring Tape



This kit and the cable used with it must be installed by a qualified electrician. All assembly, installation, and test instructions must be followed. Improper installation can result in property damage, serious injury, and/or death due to electric shock and fires. Please call Delta-Therm Corporation at 1-800-526-7887 with any installation or operating questions.

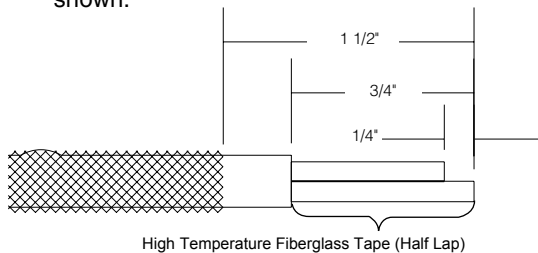
END TERMINATION (PT50)

1. Locate heater zone markers. Cut cable 4" from the end of the last marker.



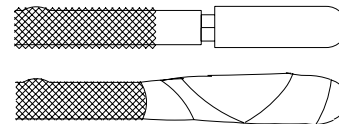
Detail 1.

2. a) Trim braid 1 1/2" from the end of the cable.
b) Remove 3/4" of the outer insulation from the end of the cable.
c) Remove the nichrome wire from the insulated bus wires.
d) Stagger the bus wires by cutting one lead 1/4" shorter than the other (do not strip ends).
e) Apply high temp fiberglass tape to the area shown.



Detail 2.

3. a) Insert the cable end into the end cap completely.
b) Seal the end cap by completely taping over the end cap with 6" self fusing silicone tape. Start at the braid and half-lap (under tension) over the cap and double back over the cap finishing over the braid.



Detail 3.

BRAID

4. Remove the braid in areas to be terminated by combing the braid with care, or trimming to the dimensions indicated above.
5. Power termination side:
Twist the braid together to form a conductor. Crimp the ring connector to the braid, and fasten to the junction box.
6. End termination side:
Before trimming, wrap braid with electrical tape to hold in place. Trim to the dimension shown above.

TECHNICAL SUPPORT

Please Call Delta-Therm Corporation at 800-526-7887 with any installation or operating questions.