

## BARTEC

### ELL-300-A

High profile end seal kit for PSB/MSB/HSB cable off pipe with red light for ordinary and hazardous locations.

#### Technical Data

<b>Ambient temperature range</b>	-40°F to 131°F / -40°C to 55°C
<b>Min. installation temperature</b>	-67°F / -55°C
<b>Power supply</b>	max. 277 Vac
<b>Min. installation temperature</b>	-67°F / -55°C
<b>Protection classification</b>	Class I, Div 2 Group A, B, C, D Class II, Div 2 Group E, F, G Class III
<b>Ingress protection</b>	NEMA Type 4X / IP65
<b>Terminals</b>	Spring clamp Ex e; 3x2 PE

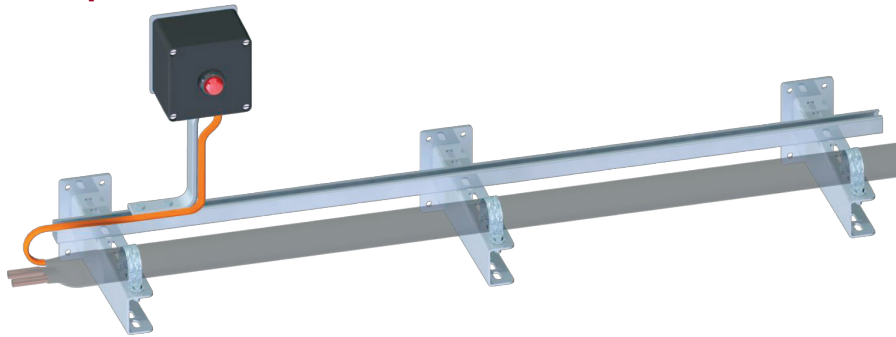


#### Certifications / Approvals










ELL-300-A End of line lamp kit for BARTEC PSB, MSB or HSB trace heaters

#### ELL-300-A End of line lamp kit



#### Kit Contents

The following table lists the kit contents of the ELL-300-A End of line lamp kit:

						
1 x Silicone pants	1 x End seal	1 x Green/yellow tube for grounding braid	1 x Bonding jumper	3 x Ferrule	1 x Metallic gland body	1 x "P"-Grommet for PSB trace heaters
						
1 x "H"-Grommet for HSB trace heaters	1 x Lock nut for gland body	1 x Lock nut for gland body	1 x Silicone adhesive	1 x Cover for junction box incl. 4 fixing screws	1 x Junction box with lamp module and grounding terminal	

## BARTEC



2 x  
Fixing screw for junction box  
ISO 1207, M6x35 (~1 1/3")



2 x  
Fixing screw for base plate  
ISO 2009, M5x20 (~ 3/4")



2 x  
Washer  
ISO 7092, M6



2 x  
Washer  
ISO 7089, Type B, M5



2 x  
Split washer  
DIN 127, Type B, M6



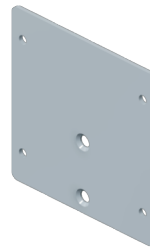
2 x  
Split washer  
DIN 127, Type B, M5



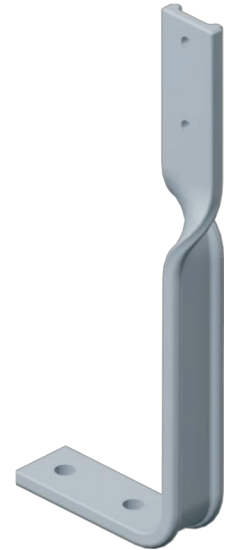
2 x  
Nut  
ISO 4032, M6



2 x  
Nut  
ISO 4032, M5



1 x Green/yellow  
tube for grounding braid



1 x  
Mounting stand  
L-shape, galvanized